

At home

in intersecting space and volumes

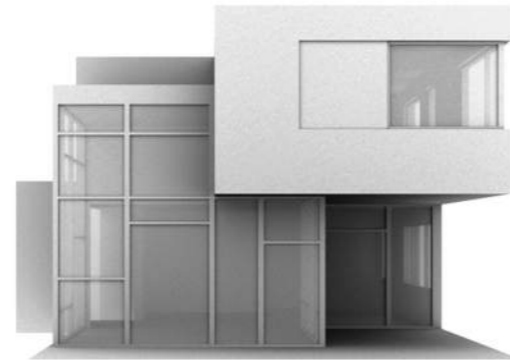
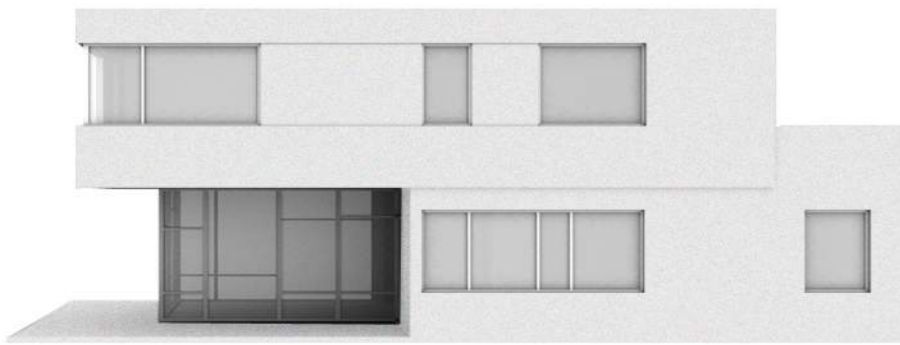
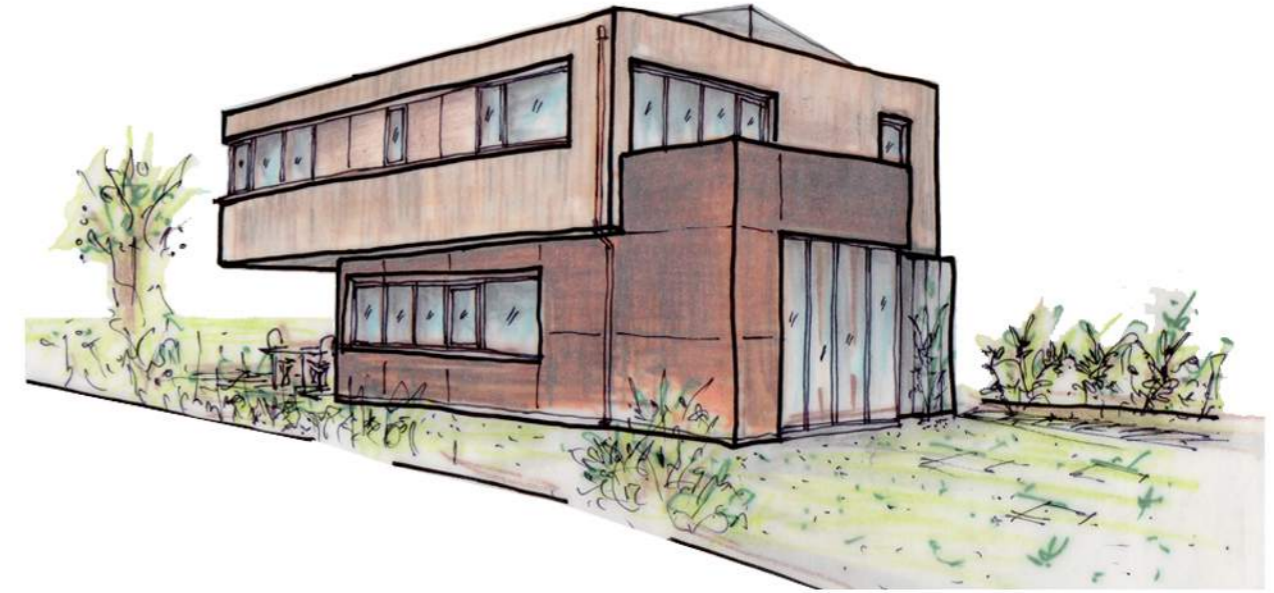
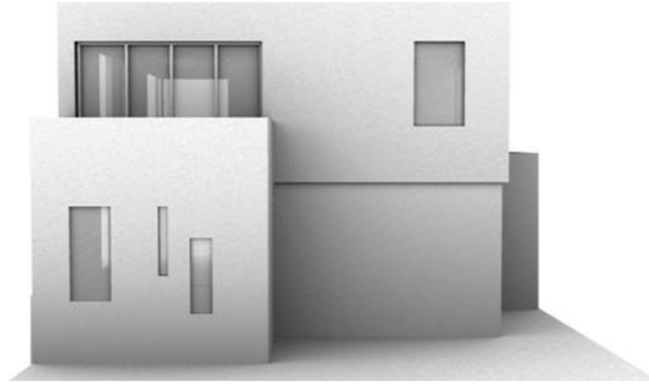
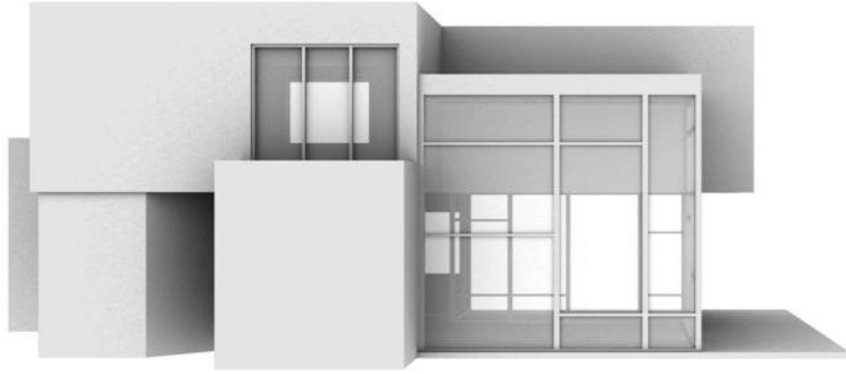
Architects:
ExS Architects
Location:
Leonidas, Kralingen Rotterdam
Area:
155 m²
Project Year:
2017
Client:
M. Benschop/L. Bosschaart
Photographs:
E. Karanastasi, M. Benschop/L. Bosschaart, G. Canas
Structural Engineer:
Goes Engineers
Contractor:
WandS (house), Van Schie (foundation and base)
Installer:
Westerik bv
Geothermal Heat Pump:
Techneco

Design responsible: E. Karanastasi
Design team preliminary design: A. Papadopoulou, N. Georgala.
Design team permit and construction: G. Antonopoulos, G. Canas
www.exsarchitects.com





The house is situated on plot 3, in the new neighborhood Leonidas in Kralingen



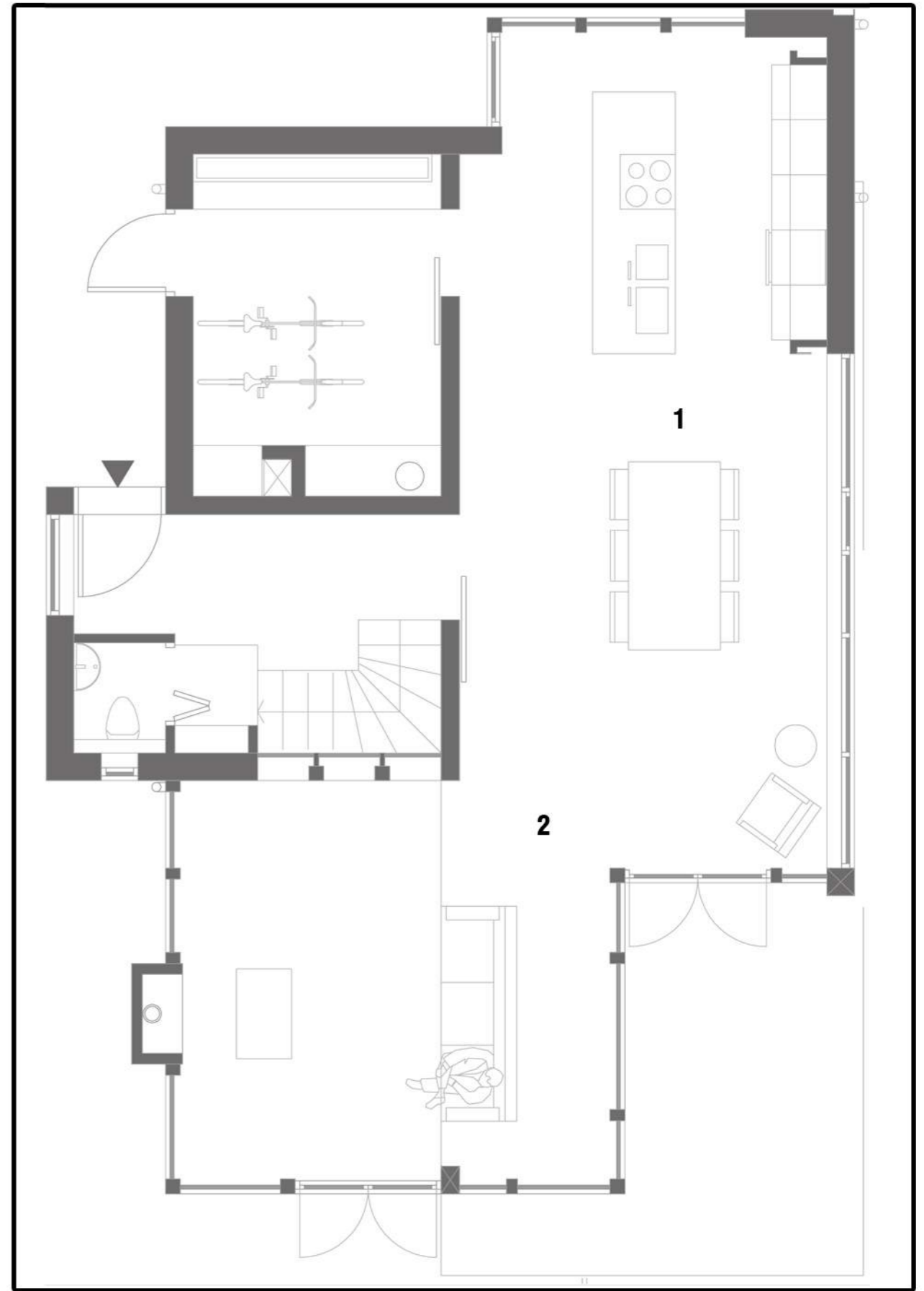
The design focuses on the differentiation of spatial qualities and the creation of niches through intersecting volumes. This reflects to the texture of facades in respect to the inside qualities: the four intersecting volumes have a distinctive skin. The hobby and sleeping spaces to be found in the cantilever volume are distinguished with a thermowood cladding, placed with an algorithmic pattern. The living spaces in the transparent volume. Kitchen and eating with corten steel cladding. Circulation spaces with grey rockpanel. In the intersection of volumes are niches and in-between spaces.



1-



2-

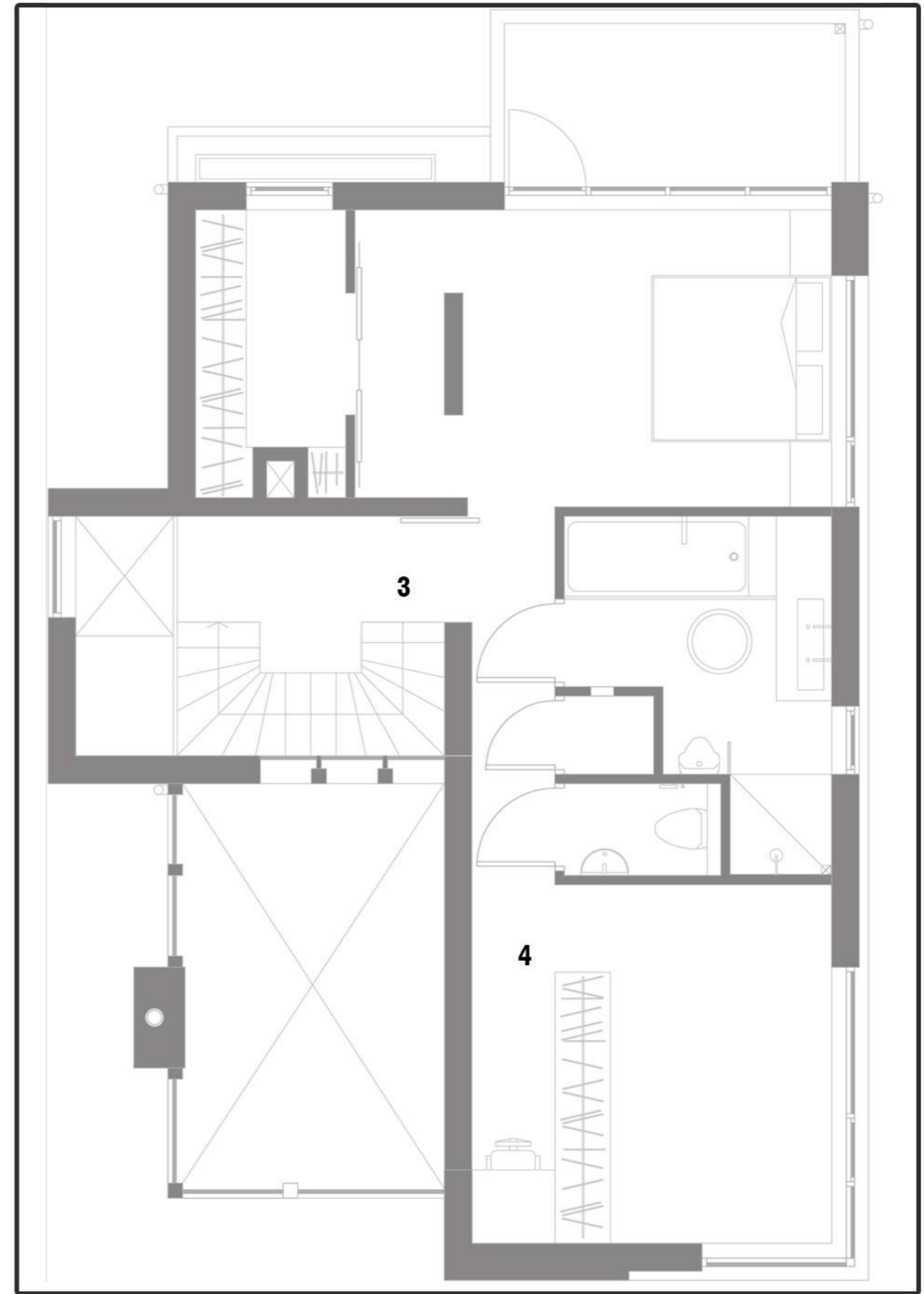




3-



4-



The inside space merges with the outside through the inbetween space of the pilotis. This offers a covered terrace for the rainy days and a shadow to the west glass facade which contributes to the creation a micro-bioclimating environment for both cold as warm days.

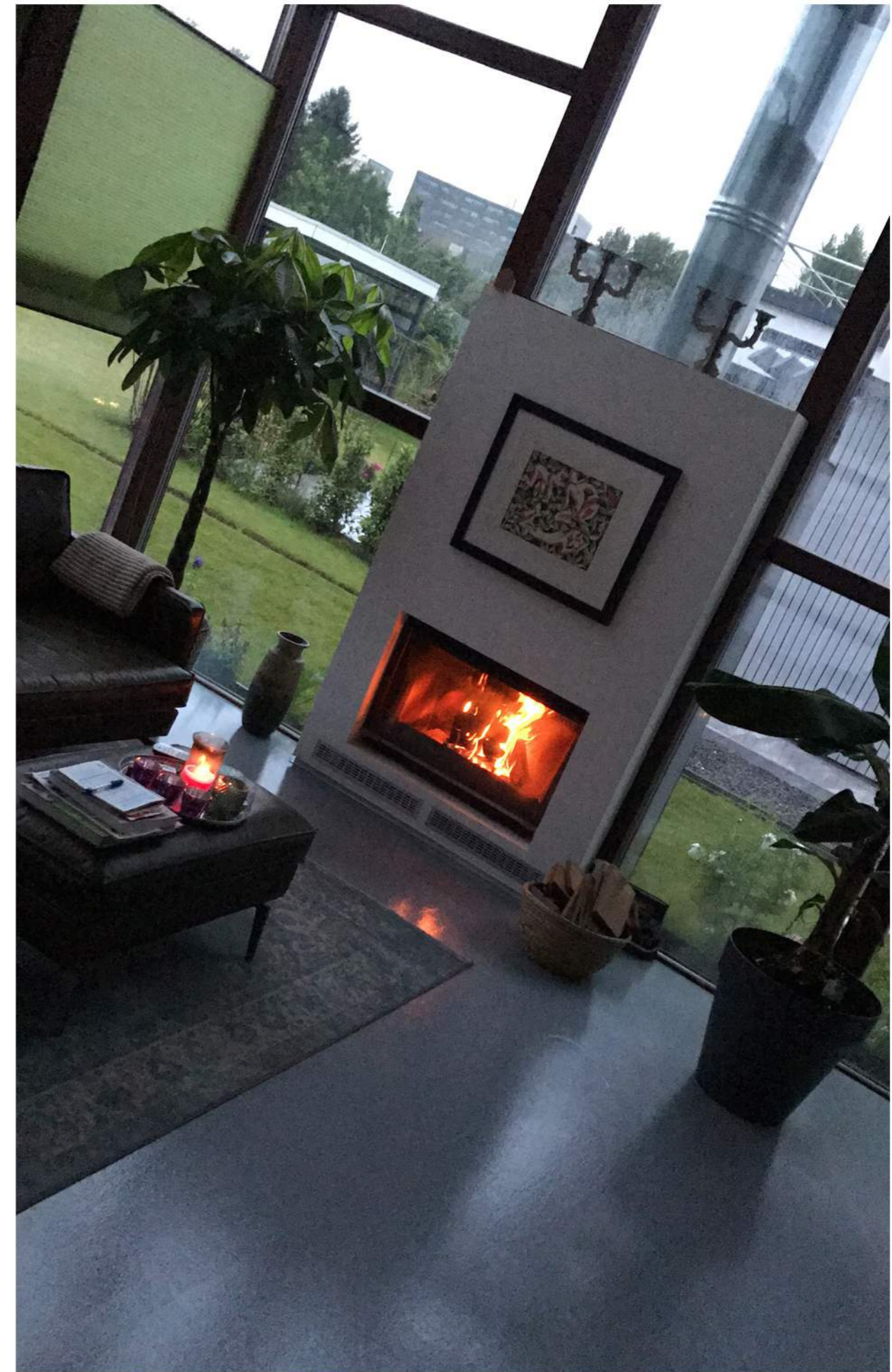






The strategic positioning of volumes according to the orientation and sun movement is enchanting the experience, decentralises the everyday life (not around a central living room but an experience of various smaller and bigger spaces) and enhancing the bioclimatic performance of the house.

The house is naturally ventilated through ventilation grids and strategically positioning of windows for the circulation of air. It is warmed and cooled through geothermal heat pump and a fireplace.



decentralised living spaces



